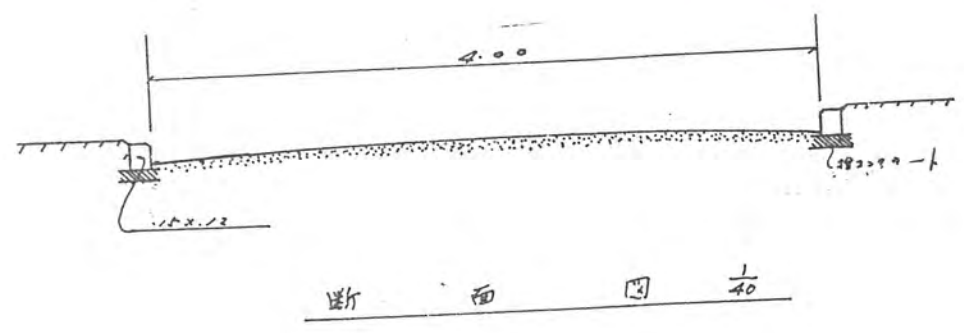
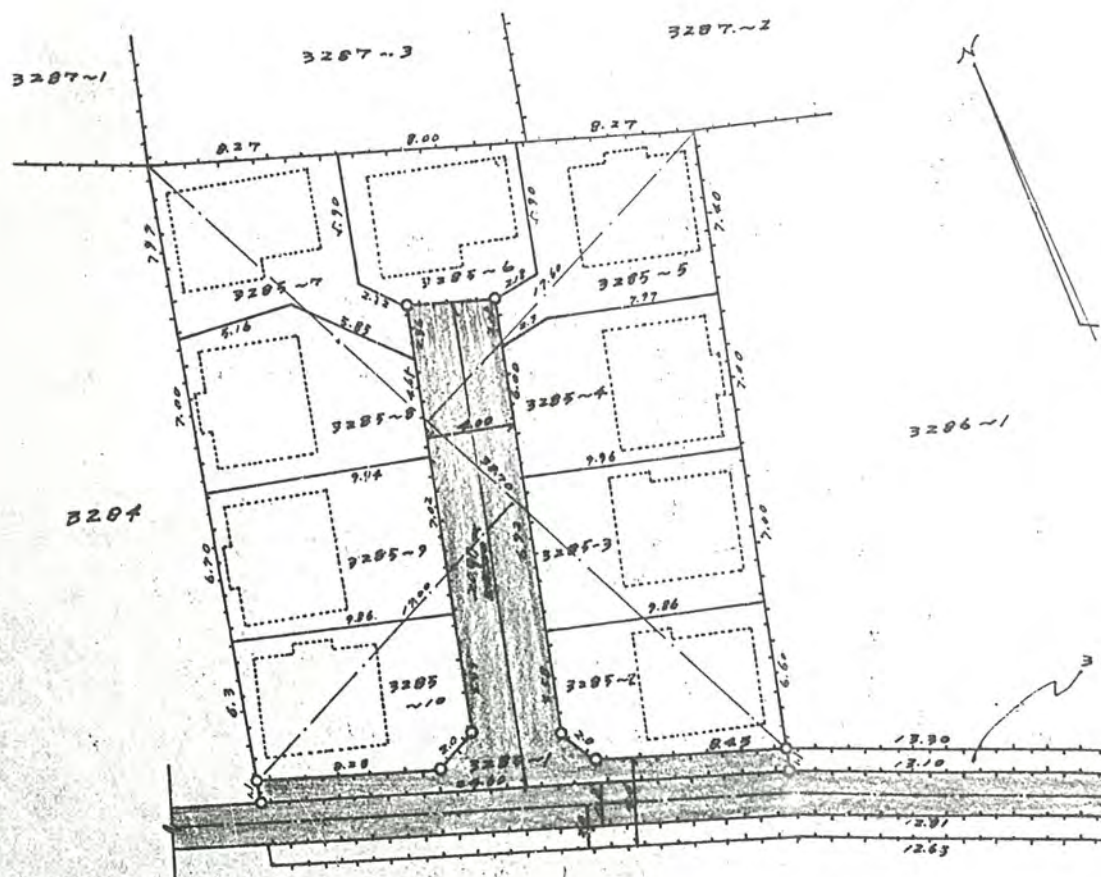


45年4月23日第205号
幅員4.0m 延長20.90m



求積表

1	$38.70 \times (17.00 + 12.60) =$	$669,510.0^{\text{m}^2}$
2	$29.60 \times (11.00 + 9.00) =$	$270,600.0^{\text{m}^2}$
(計)		$940,110.0^{\text{m}^2}$

